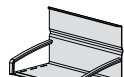


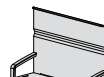
PZ-002A



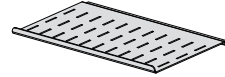
PZ-002B



PZ-002C



PZ-008



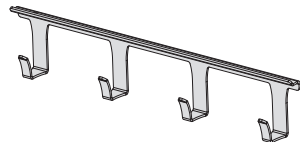
PZ-003



PZ-007
uses with PZ-004A,
PZ-004B or PZ-004C



PZ-004A



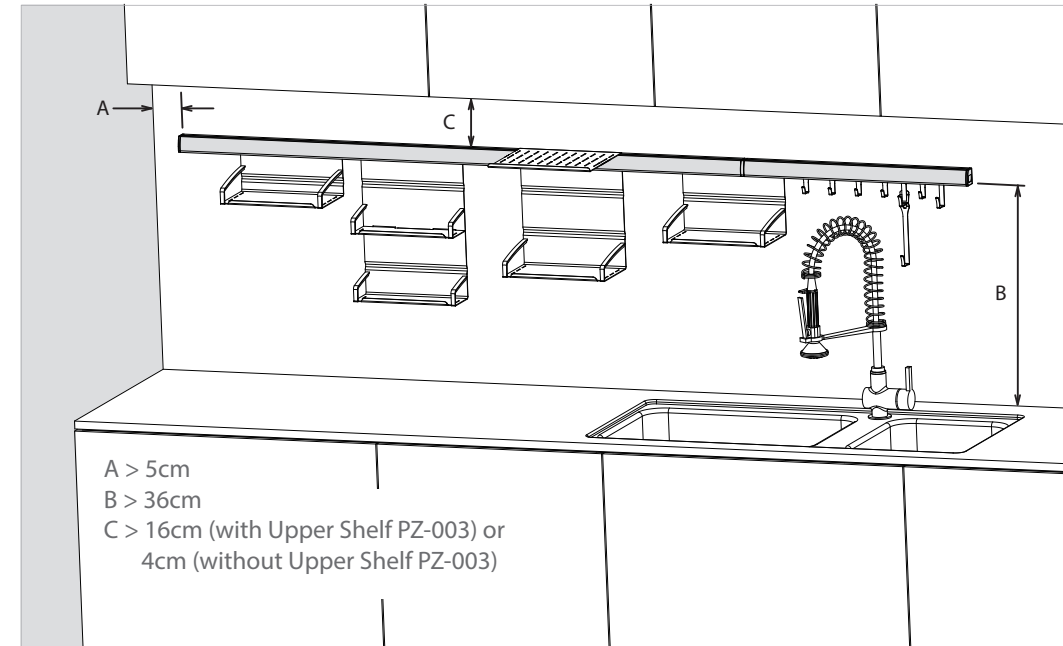
PZ-004B



PZ-004C

Update product information
visit website :
www.foresthome.com.hk

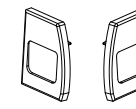
Installation instructions



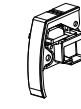
A > 5cm
B > 36cm
C > 16cm (with Upper Shelf PZ-003) or
4cm (without Upper Shelf PZ-003)

Package contents

- 1 x Aluminium rail set (PZ-001) with protective end caps (disposable)
- 2 x End cap (PZ-A01)
- 1 x Connector (PZ-A02)
- 5 x Screw 4x35mm
- 5 x Plastic anchor



End Cap



Connector

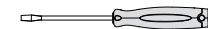
Tools required



PH2 Screw bit



6mm drill bit



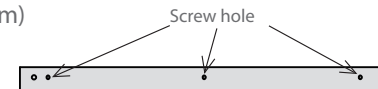
Screw driver



Drill driver

Aluminium rail set Dimensions (mm)

B x D x H
600 x 30.9 x 40



PZ-001 (600)

900 x 30.9 x 40



PZ-001 (900)

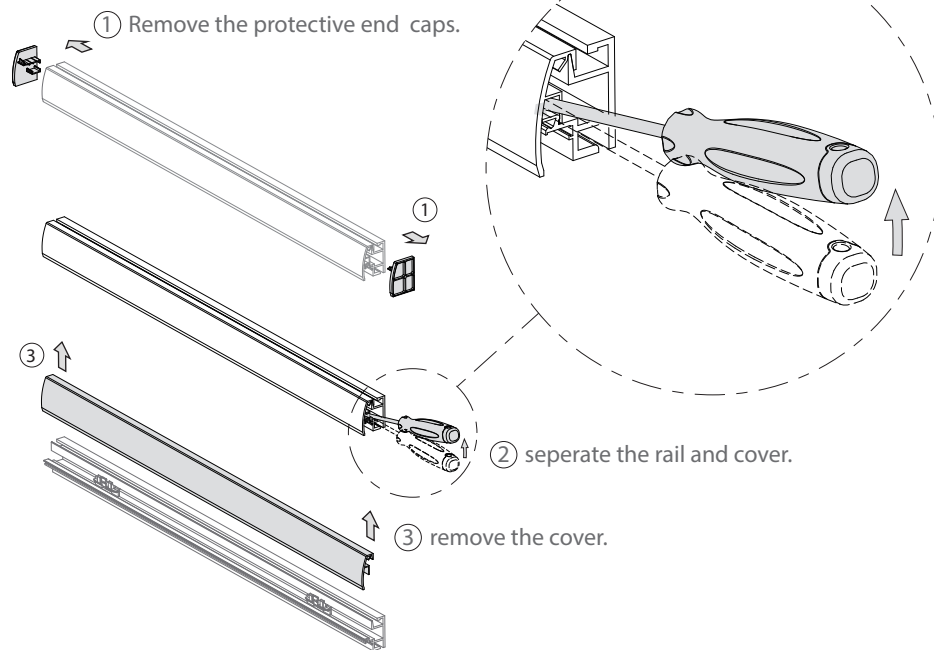
1100 x 30.9 x 40



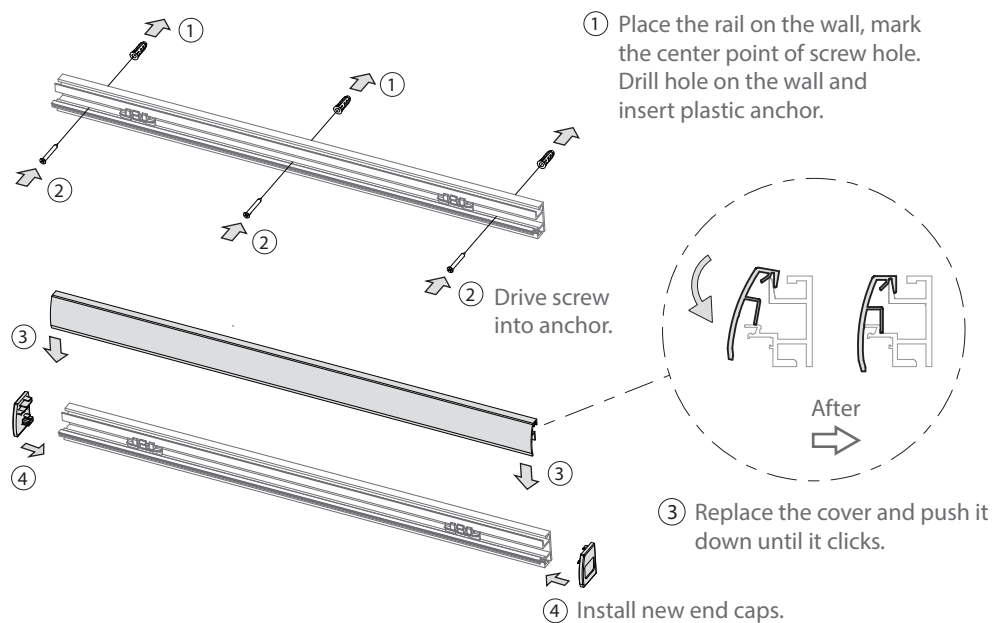
PZ-001 (1100)

Disassembly aluminium rail set

2



Install aluminium rail set



Install 2 or above aluminium rail sets

3

